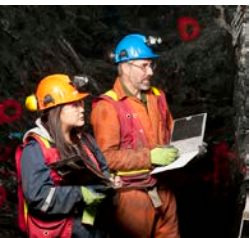




LE PROJET AMARUQ, NUNAVUT : HISTORIQUE DE DÉCOUVERTE ET GÉOLOGIE D'UN NOUVEAU GISEMENT AURIFÈRE

Olivier Côté-Mantha
Patrice Barbe
Marjorie Simard



FORUM TECHNOLOGIQUE
CONSOREM-DIVEX
2 JUIN 2015



ÉNONCÉS PROSPECTIFS/FORWARD LOOKING STATEMENT

The information in this presentation has been prepared as of June 2nd, 2015. Certain statements contained in this presentation constitute "forward-looking statements" within the meaning of the United States Private Securities Litigation Reform Act of 1995 and "forward looking information" under the provisions of Canadian provincial securities laws and are referred to herein as "forward-looking statements". When used in this presentation, words such as "estimated", "expected", "resume", "will" and similar expressions are intended to identify forward-looking statements or information.

Such statements and information include, without limitation, statements relating to the future exploration, permitting and development activities to be undertaken at the Amaruq project. The material factors and assumptions used in the preparation of forward-looking statements contained herein, which may prove to be incorrect include, but are not limited to, that that exploration, permitting and development at the Amaruq project proceeds on a basis consistent with current expectations and plans.

These forward-looking statements are subject to numerous risks, uncertainties and assumptions, certain of which are beyond the control of Agnico Eagle. Agnico Eagle disclaims any intention or obligation to update or revise any forward-looking statements, whether as a result of new information, future events or otherwise except as required by applicable securities laws.



AGNICO EAGLE – AMARUQ

PLAN DE LA PRÉSENTATION



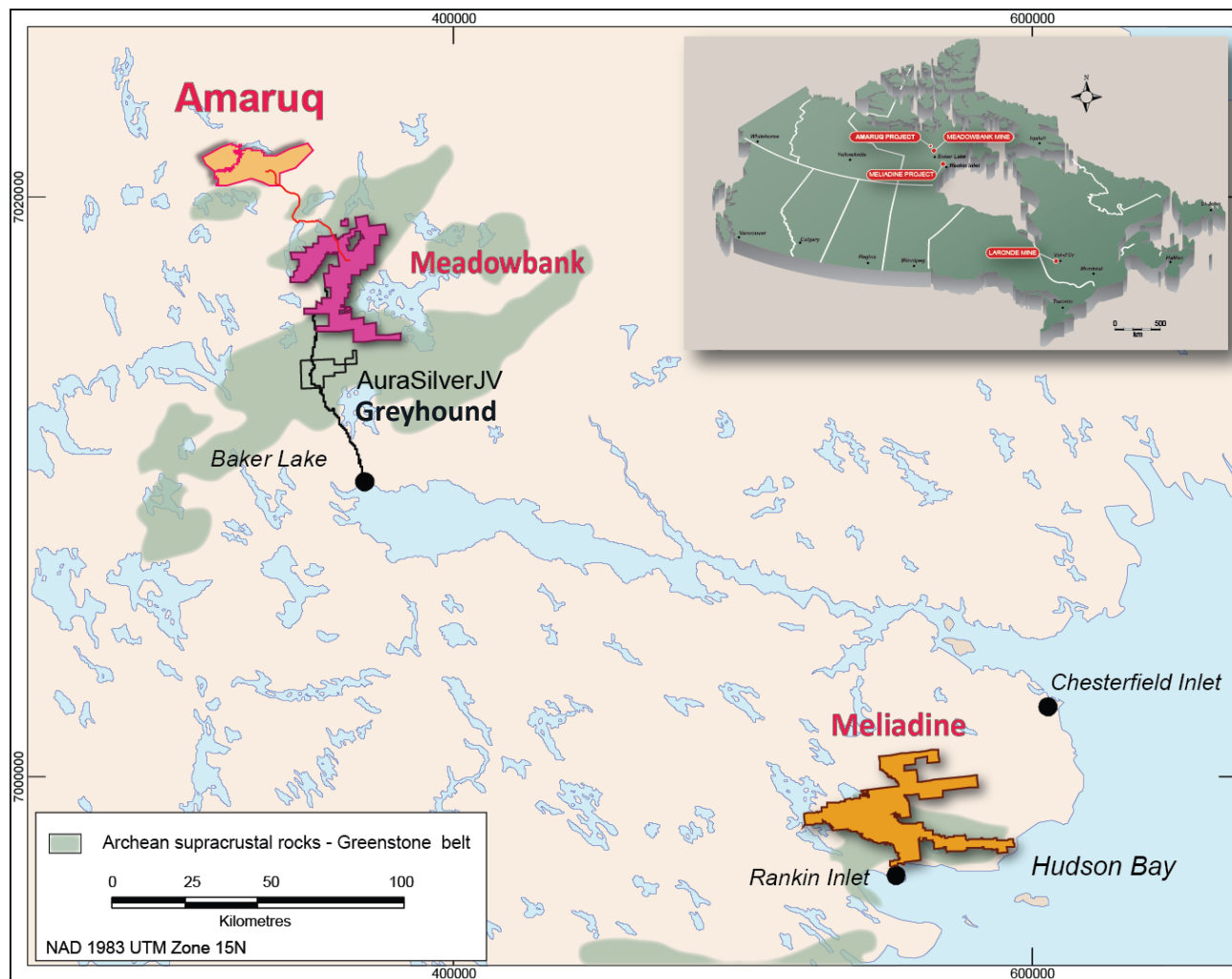
1. Localisation et géologie régionale
2. Historique de découverte
3. Géologie de la Zone Whale Tail
4. Ressources et campagne 2015 sur Whale Tail
5. Exploration ailleurs sur la propriété Amaruq



AGNICO EAGLE AU NUNAVUT

POSITIONNEMENT STRATÉGIQUE CRÉANT UNE SYNERGIE

Status:



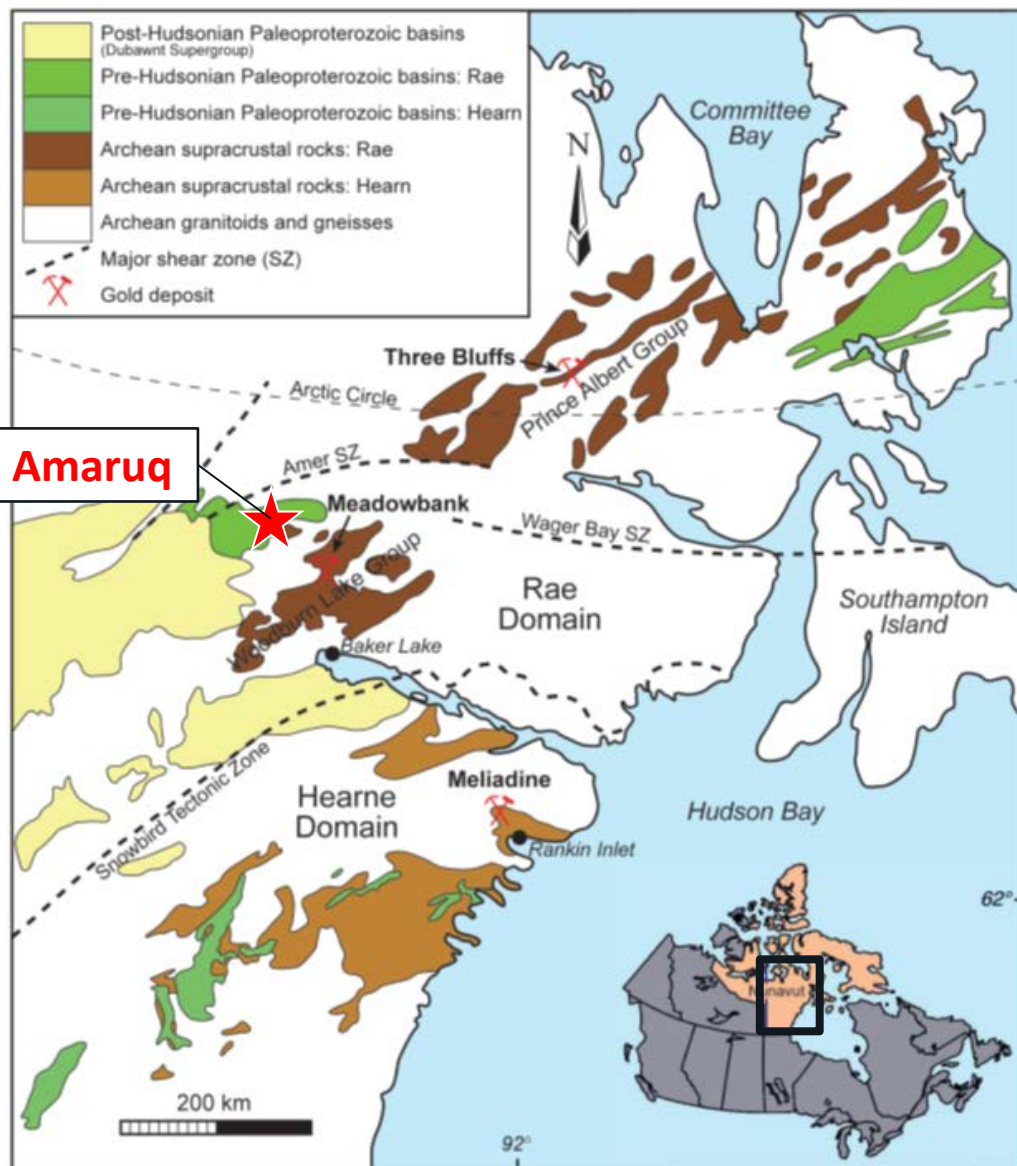
- **Meadowbank Au**
Commercial Production 2010
Reserves 1.751 Moz 16.8Mt 3.24 g/t
Ind. Res. 0.768 Moz 7.3Mt 3.28 g/t
Inf. Res. 0.421 Moz 3.3Mt 3.96 g/t
- **Meliadine Au**
Advanced Exploration
Reserves 2.841 Moz 12.0Mt 7.38 g/t
Ind. Res. 3.082 Moz 19.0Mt 5.05 g/t
Inf. Res. 2.712 Moz 11.7Mt 7.20 g/t
- **Amaruq Au**
40,836 ha Inuit-owned Land
- **Greyhound Au & VMS**
13,585 ha
Optioned From Aura Silver

* Reserves and resources as of December 31st 2013



AMARUQ

GÉOLOGIE RÉGIONALE



Churchill Province:

- Craton deformed during the Archean, then deformed again via the **trans-hudsonian orogeny** during the Paleoproterozoic
- Made up of the **Rae** and **Hearne** domains, put against each other along a suture zone, the **Chesterfield Block (Cb)**

Meadowbank and Amaruq:

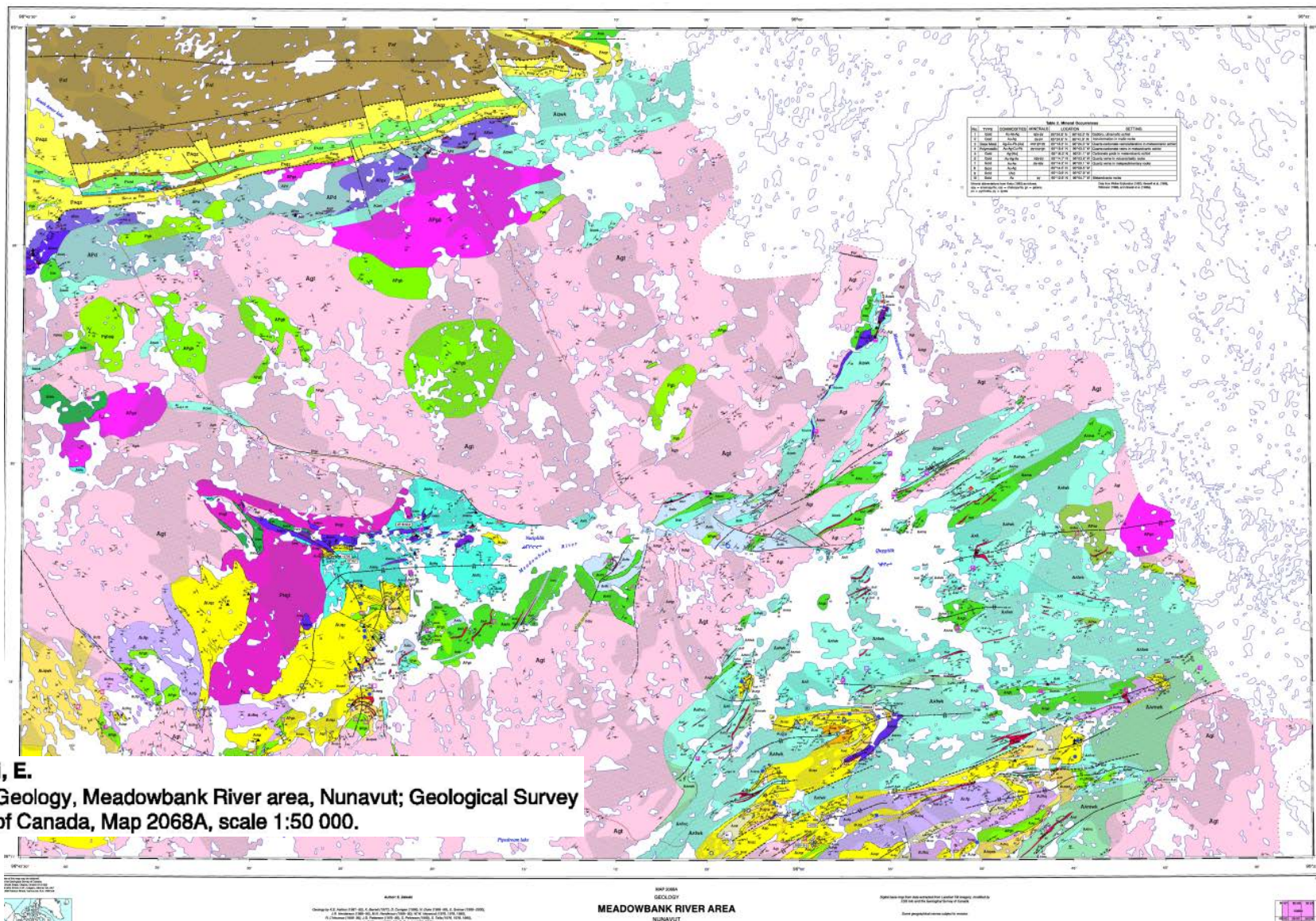
- Hosted in the **Woodburn Lake Group (~2.71 Ma)**, an Archean Greenstone Belt located in the **Rae Domain**

(Davies et al., 2010)



AMARUQ

GÉOLOGIE RÉGIONALE

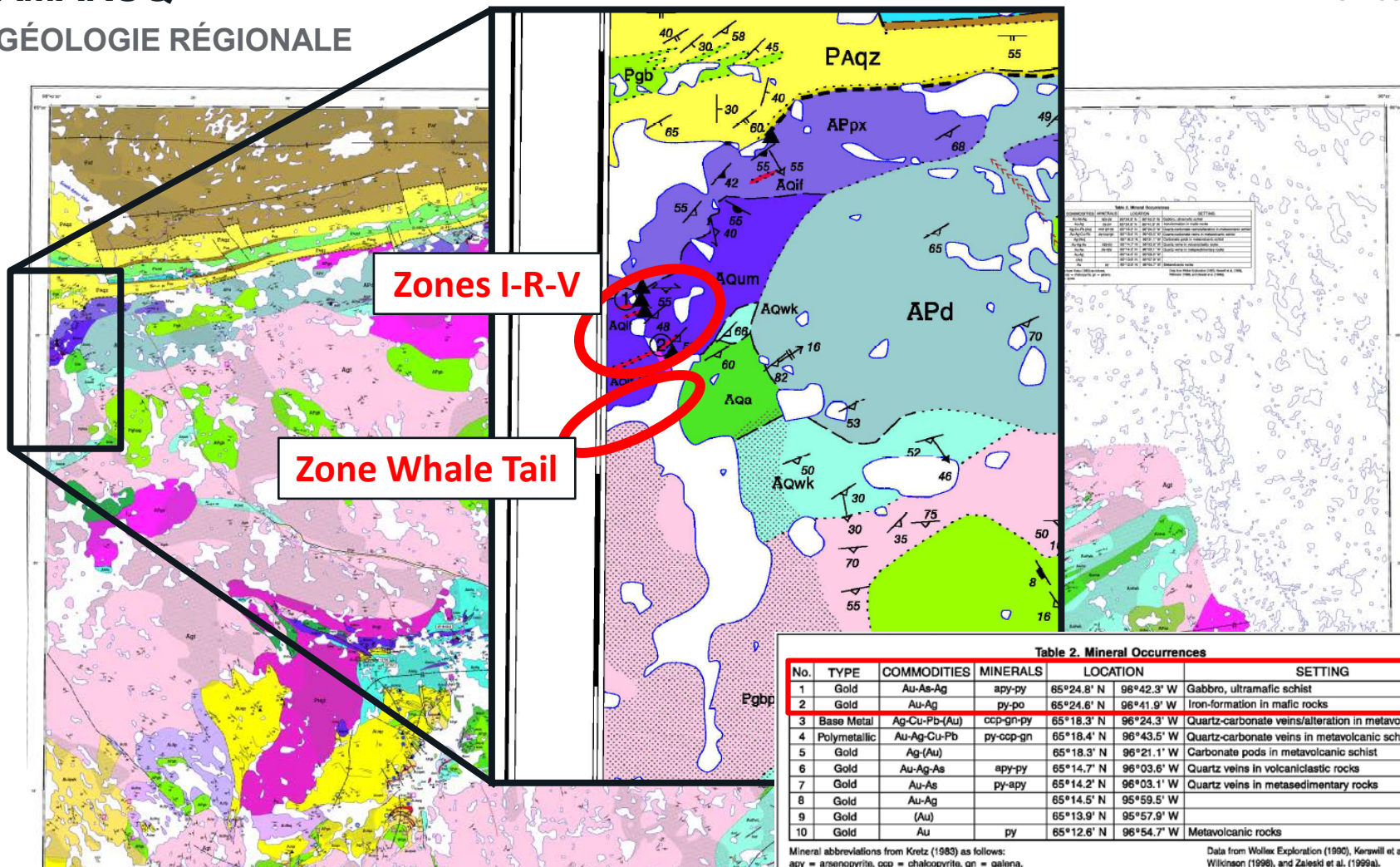


Zaleski, E.
 2005: **Geology, Meadowbank River area, Nunavut; Geological Survey of Canada, Map 2068A, scale 1:50 000.**

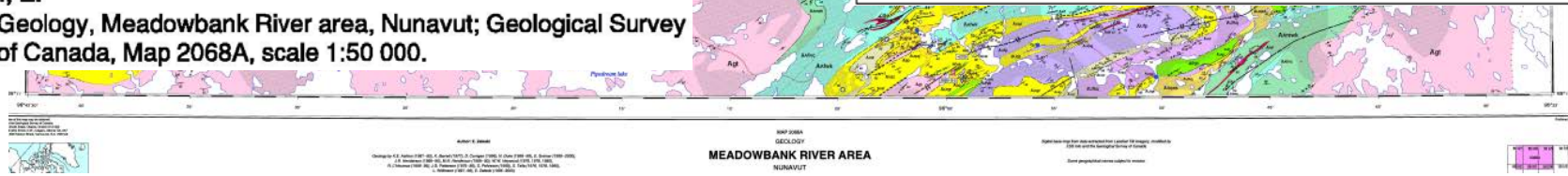


AMARUQ

GÉOLOGIE RÉGIONALE



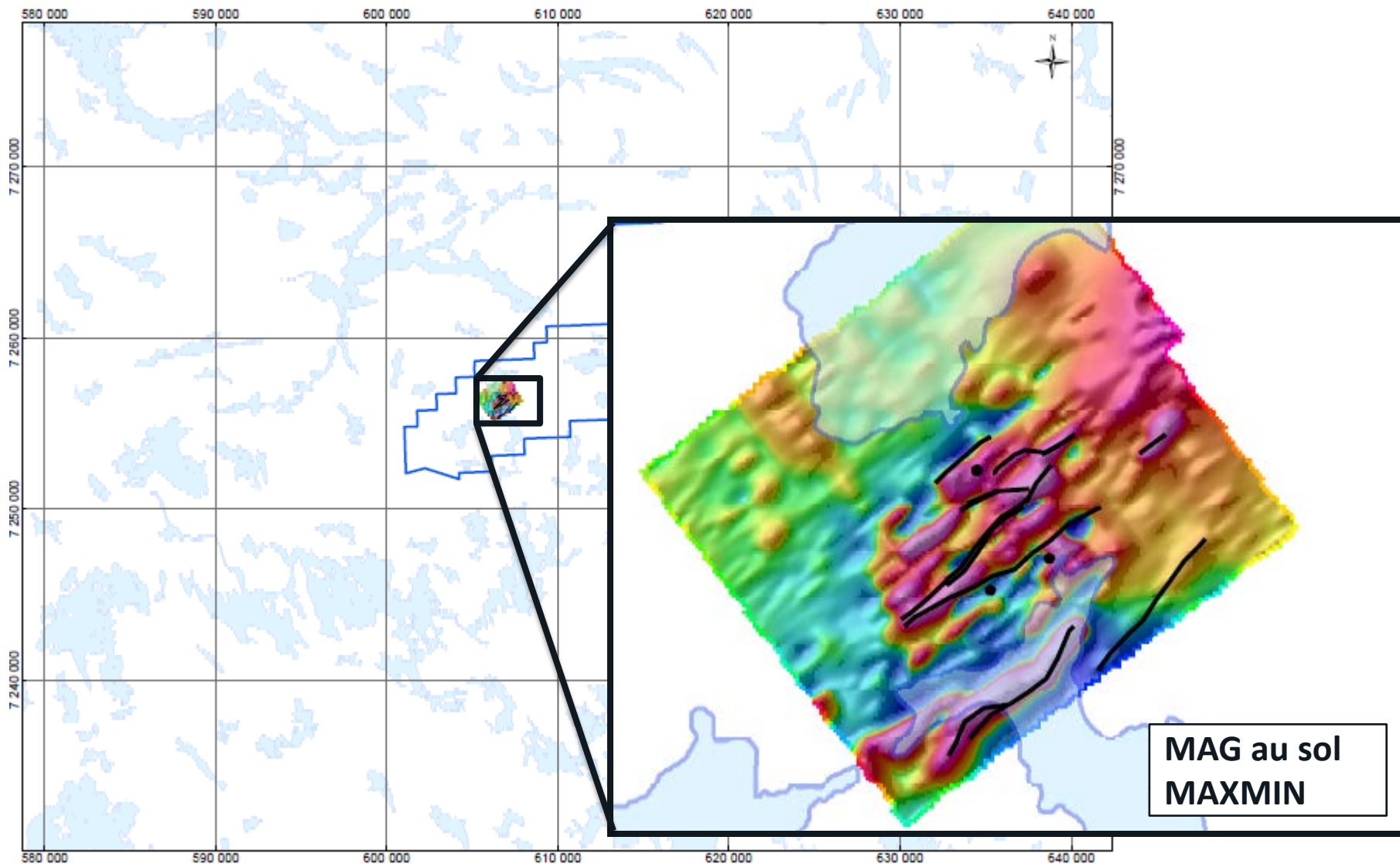
Zaleski, E.
 2005: Geology, Meadowbank River area, Nunavut; Geological Survey of Canada, Map 2068A, scale 1:50 000.





AMARUQ

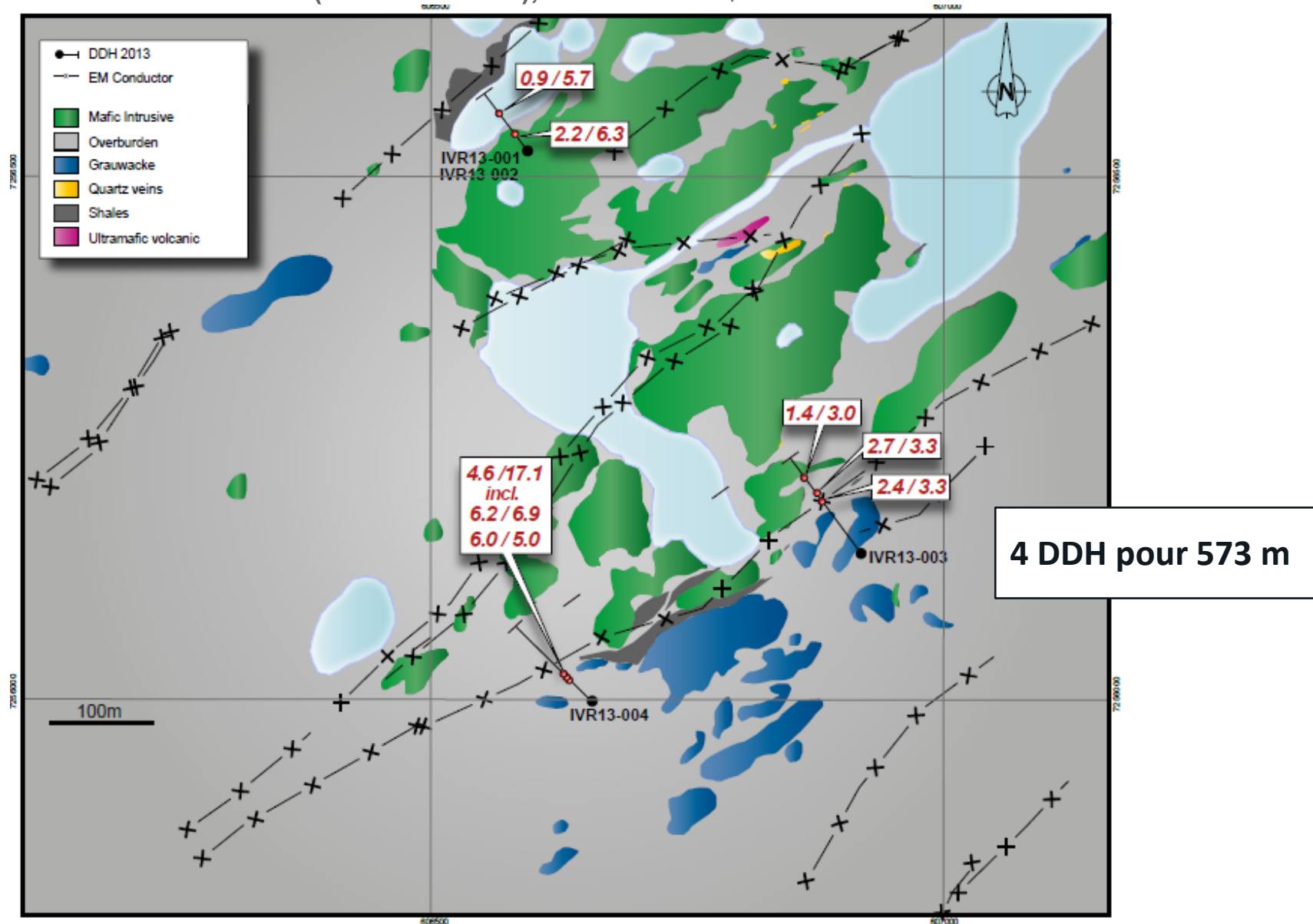
CAMPAGNE INITIALE 2013 (AVRIL À AOÛT), BUDGET DE \$250K





AMARUQ

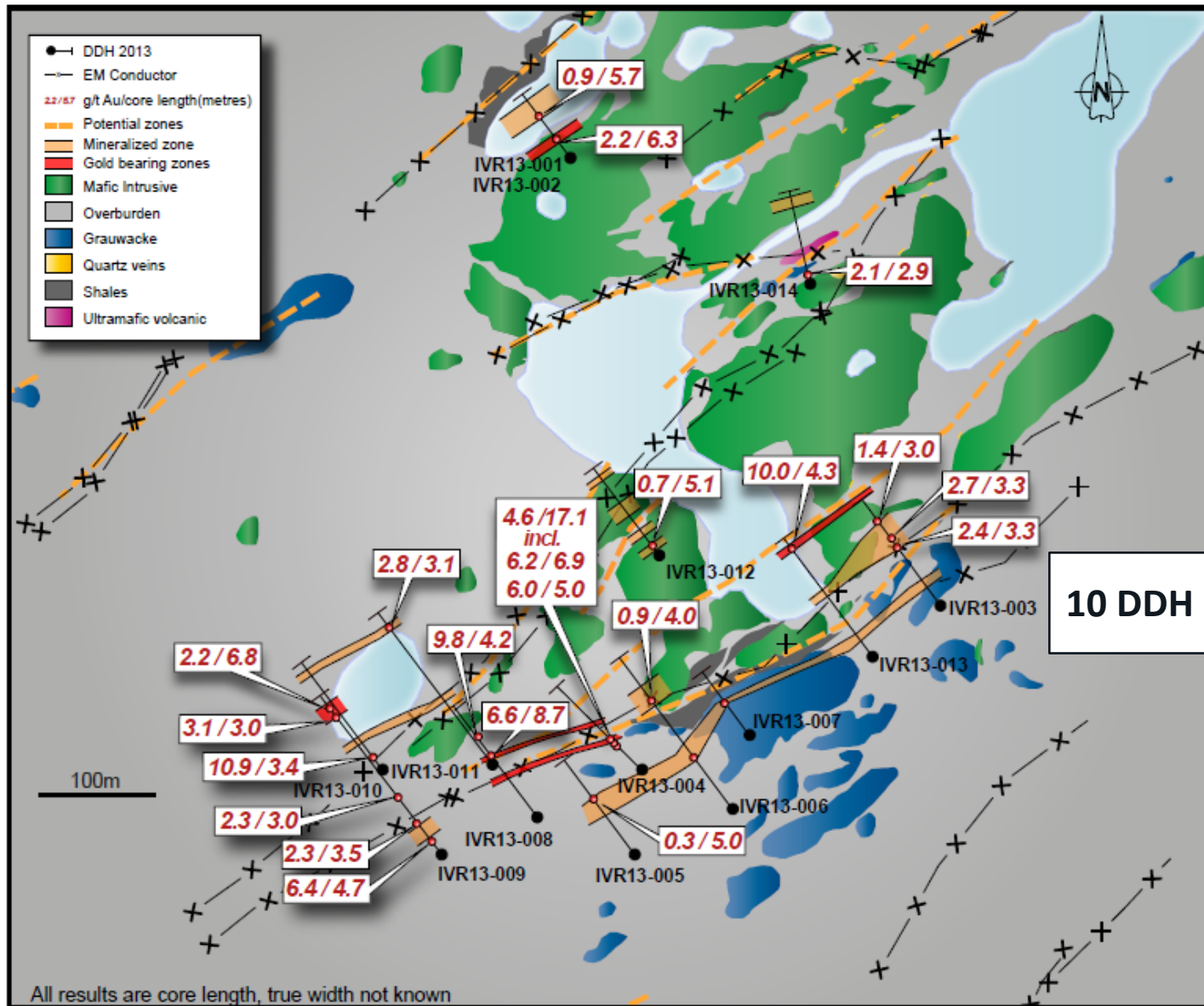
CAMPAGNE INITIALE 2013 (AVRIL À AOÛT), BUDGET DE \$250K





AMARUQ

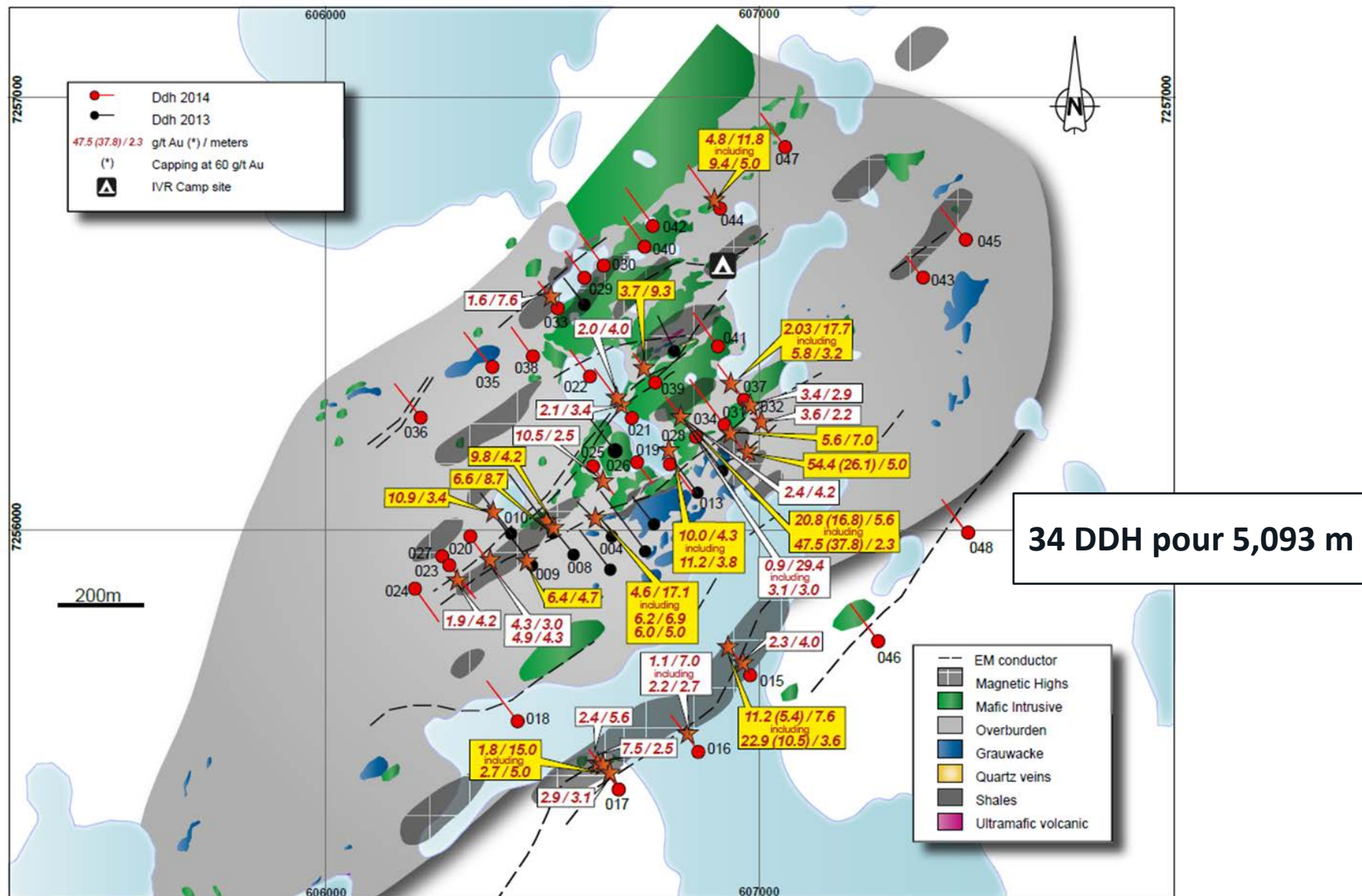
2013 PHASE 2 (SEPT-OCT), BUDGET DE \$600K





AMARUQ

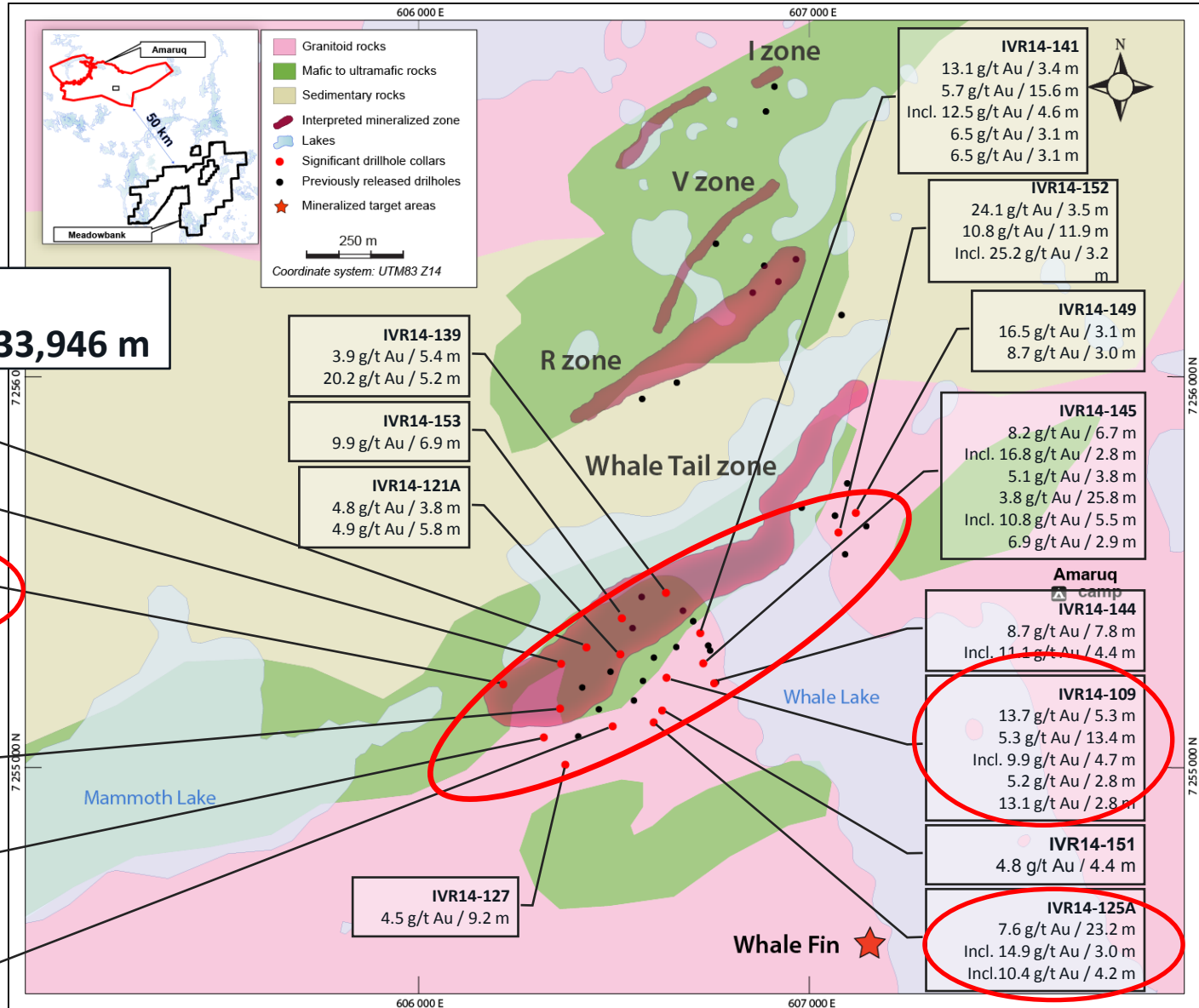
2014 PHASE 1, BUDGET DE \$1.25M





AMARUQ

LA ZONE WHALE TAIL DEVIENT LE CENTRE D'INTÉRÊT



**Fin 2014:
158 DDH pour 33,946 m**

IVR14-150
8.1 g/t Au / 12.1 m
5.9 g/t Au / 5.4 m

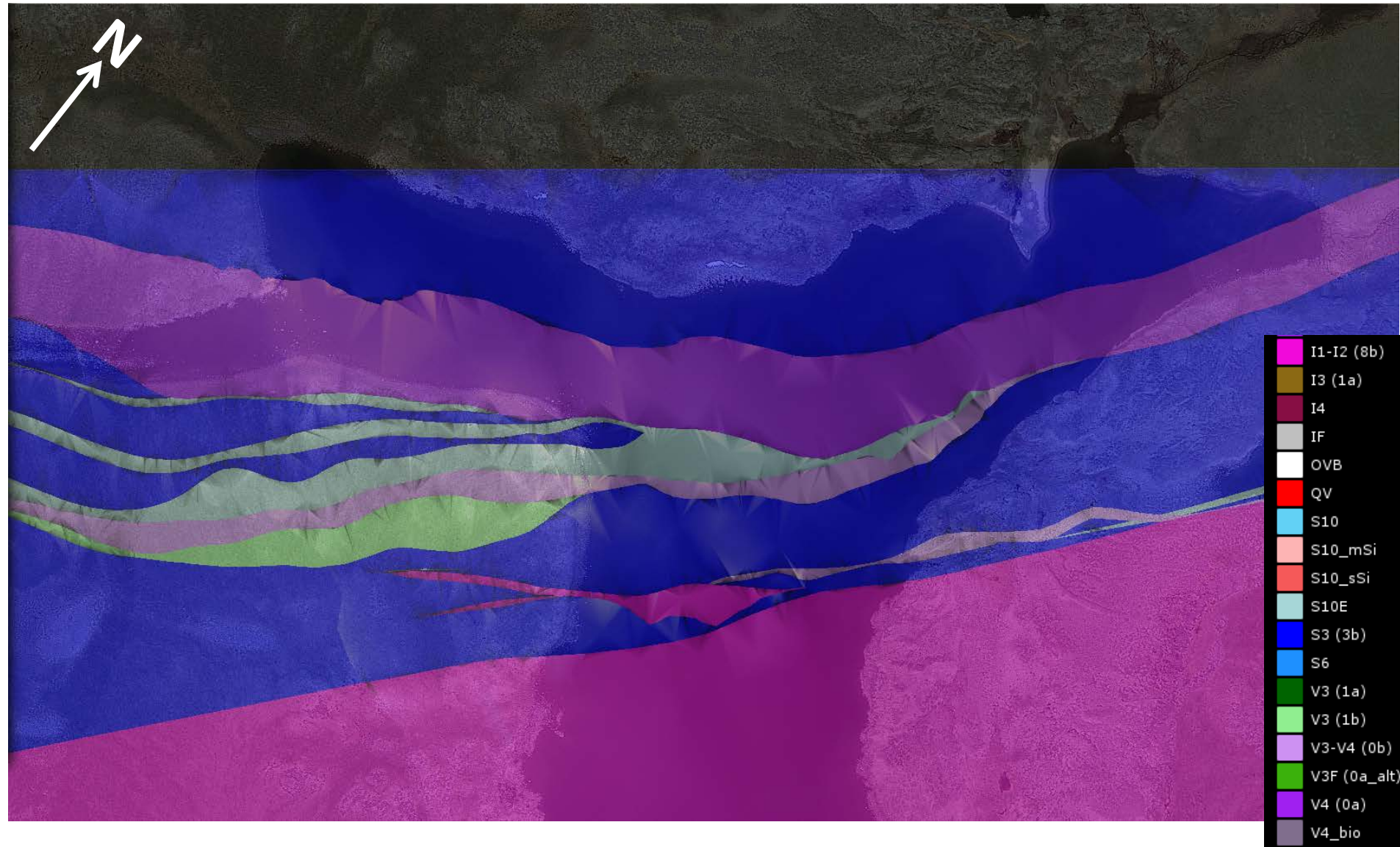
IVR14-109
13.7 g/t Au / 5.3 m
5.3 g/t Au / 13.4 m
Incl. 9.9 g/t Au / 4.7 m
5.2 g/t Au / 2.8 m
13.1 g/t Au / 2.8 m

IVR14-125A
7.6 g/t Au / 23.2 m
Incl. 14.9 g/t Au / 3.0 m
Incl. 10.4 g/t Au / 4.2 m



AMARUQ: ZONE WHALE TAIL

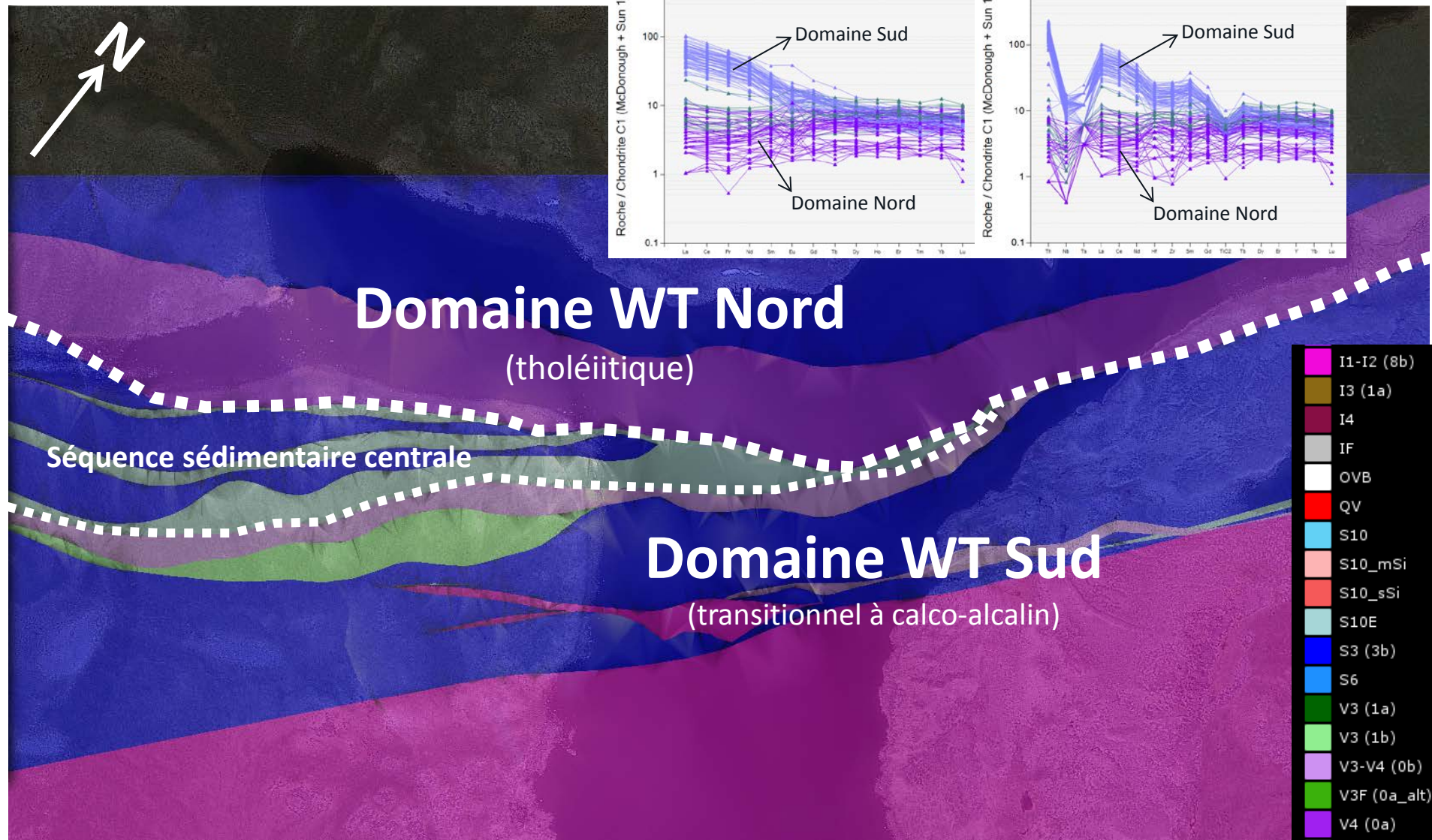
GÉOLOGIE LOCALE – VUE DE PLAN





AMARUQ: ZONE WHALE TAIL

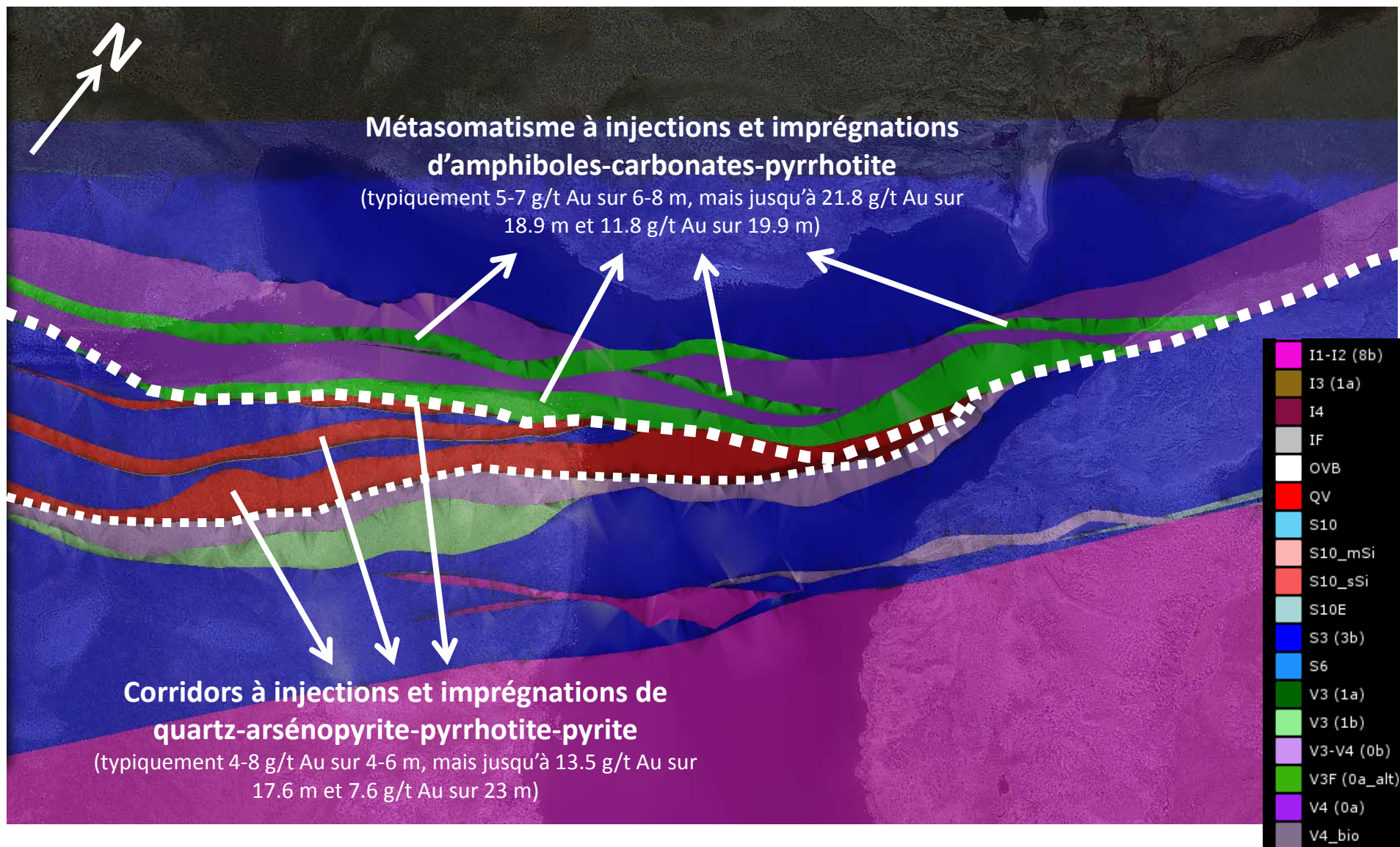
GÉOLOGIE LOCALE – VUE DE PLAN





AMARUQ: ZONE WHALE TAIL

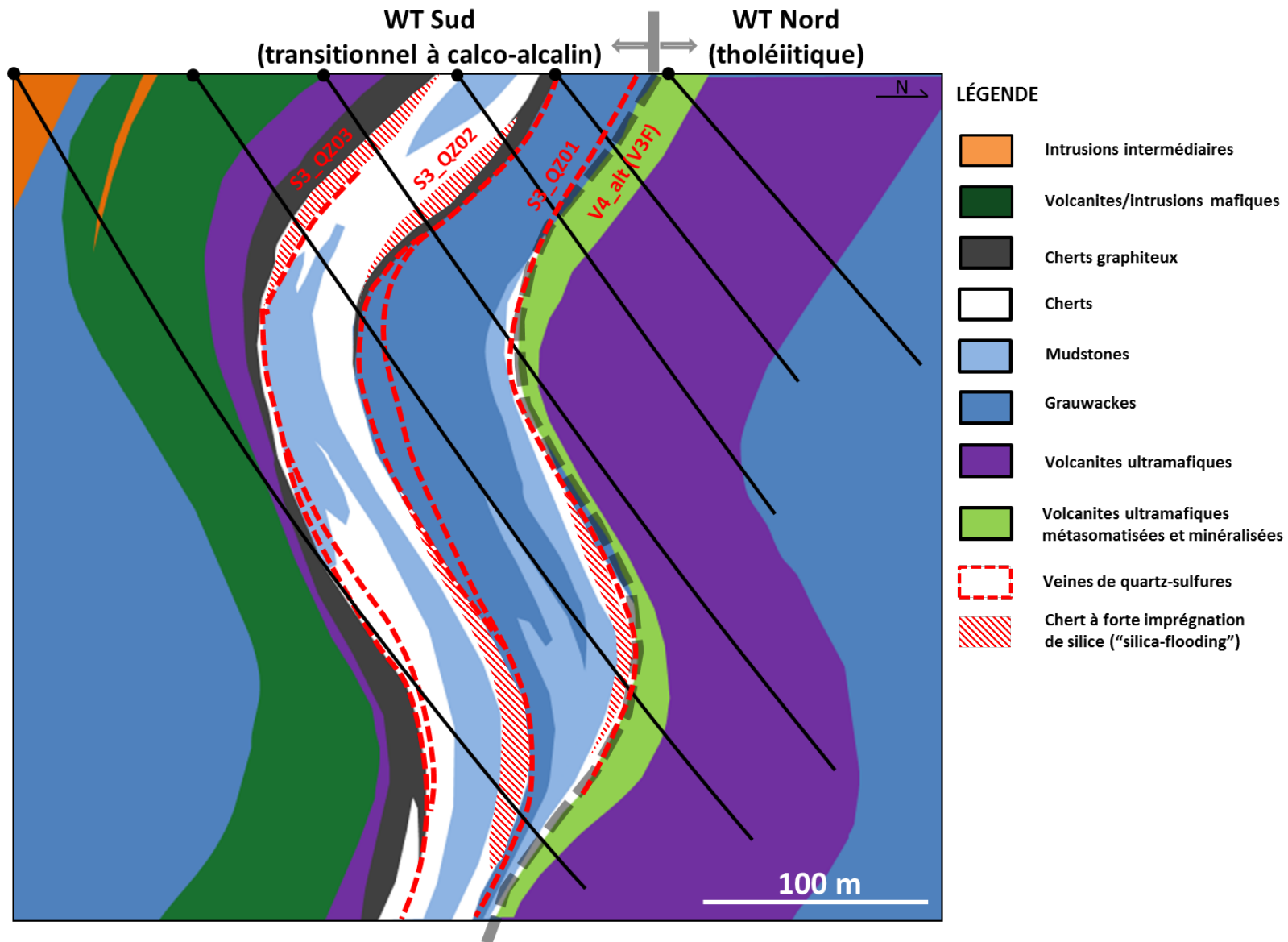
GÉOLOGIE LOCALE – VUE DE PLAN





AMARUQ: ZONE WHALE TAIL

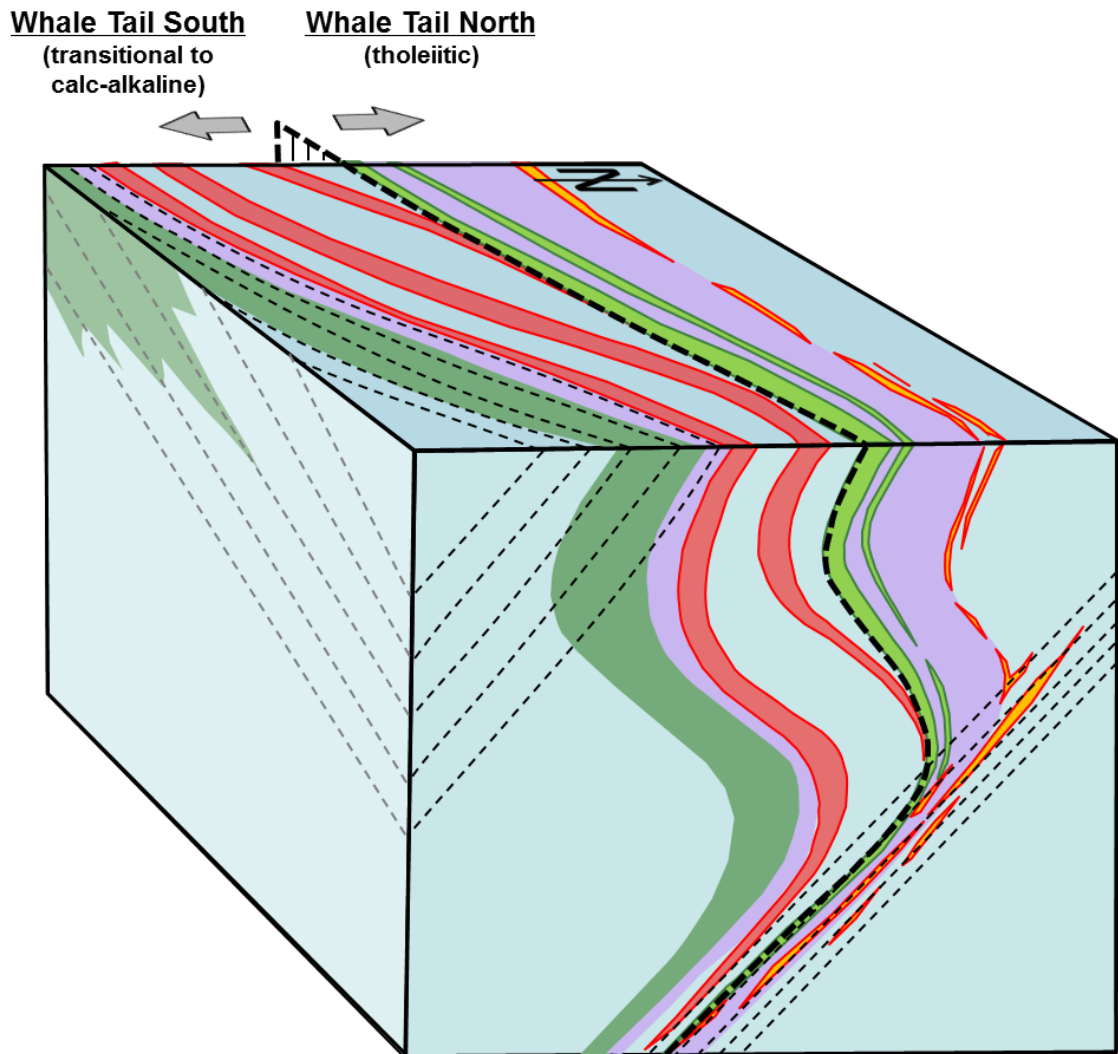
GÉOLOGIE LOCALE – SECTION SCHÉMATIQUE





AMARUQ: ZONE WHALE TAIL

GÉOLOGIE LOCALE – MODÈLE 3D SIMPLIFIÉ



Legend

Lithologies

- Sediments
- Ultramafic volcanics
- Mafic volcanics

Ore types

- Quartz vein
- Chert SI flooding/QV
- Pyrrhotite-carbonate replacement

Structure

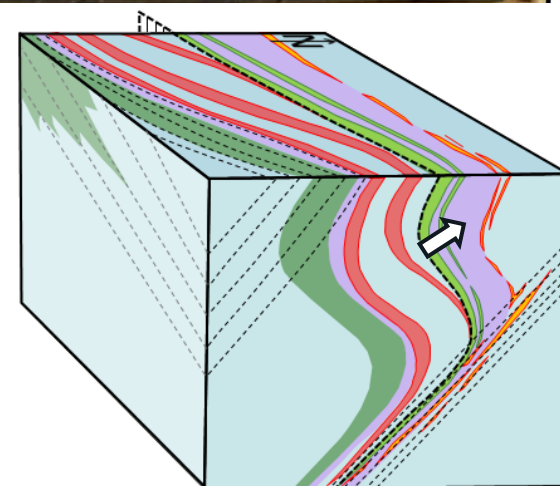
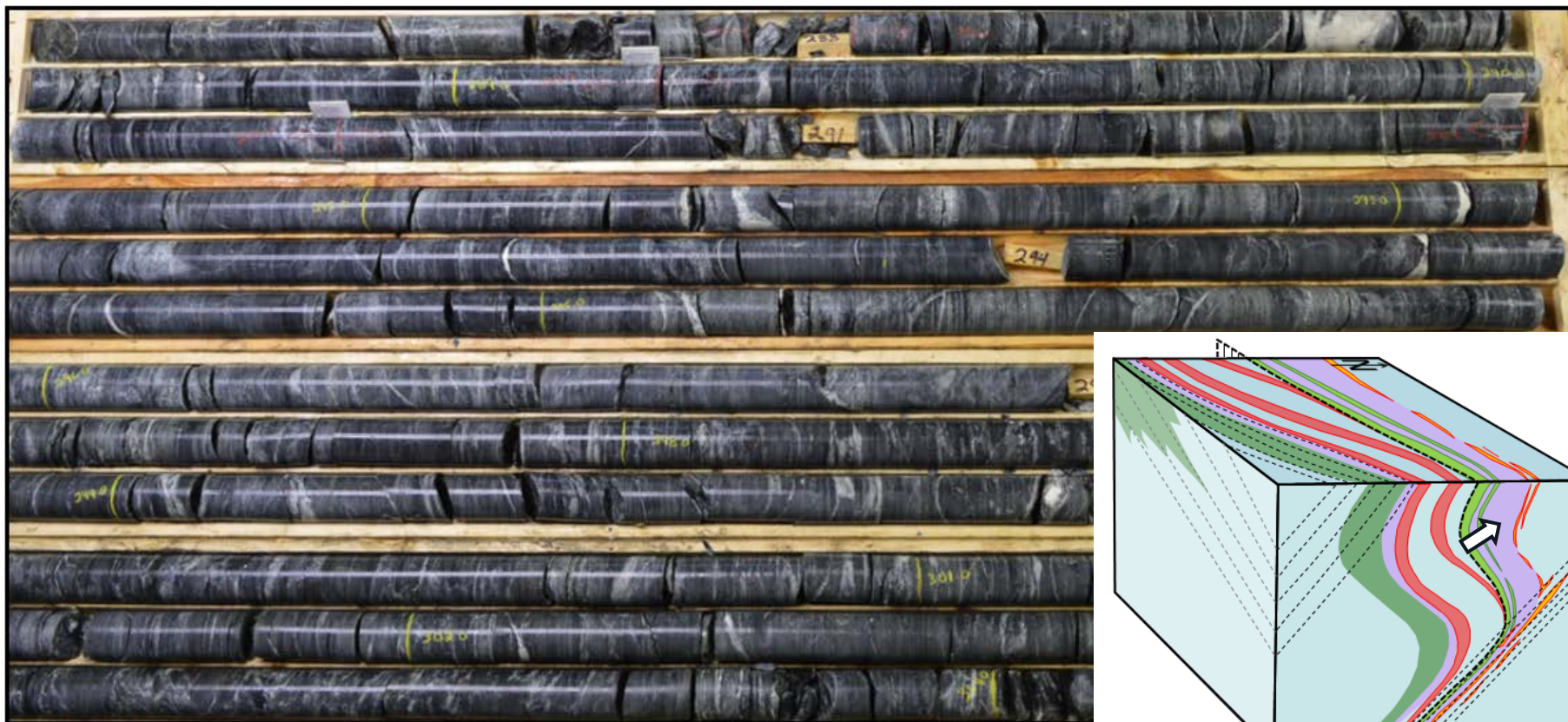
- ENE-WSW high strain zone
- Domain boundary

AMARUQ: ZONE WHALE TAIL

MINÉRALISATION – IMPRÉGNATIONS À AMPHIBOLES-CARBONATES-PYRRHOTITE

Komatiite (V4A):

- Decametric unit, frequently altered to a chlorite-talc-carbonate schist (soapstone) with common chaotic carbonate veinlets. Frequently biotite altered when more deformed
- Generally very soft rock with highly variable RQD but rarely excellent, common fault gouge
- Tholeiitic geochemistry (0a geochemical code)

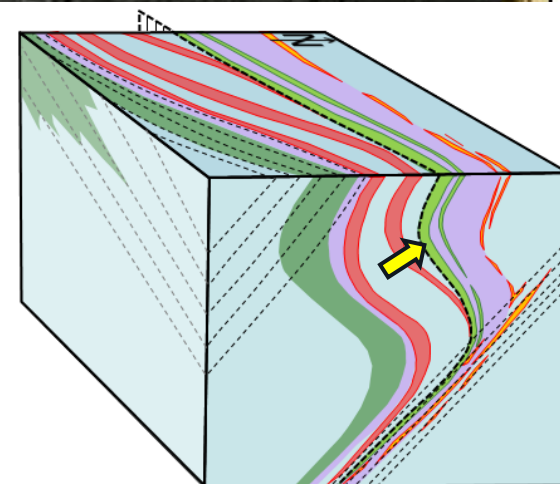
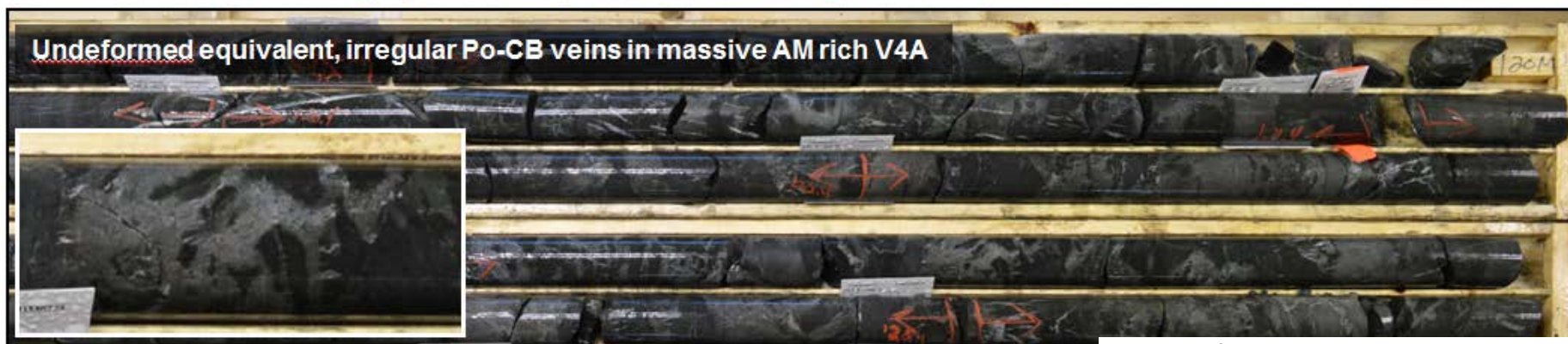


AMARUQ: ZONE WHALE TAIL

MINÉRALISATION – IMPRÉGNATIONS À AMPHIBOLES-CARBONATES-PYRRHOTITE

Altered V4 mineralized zone (V3F):

- Strong amphibole-carbonates alteration and replacement of V4A unit, mainly at contact with sediments, very dense, hard and magnetic rock, variable silicification and local minor quartz veining
- Disseminated fine grained Po mineralization, locally up to semi-massive dm bands with carbonates, generally very low Aspy
- Greenish-blackish-greyish banding aspect with local garnet when deformed



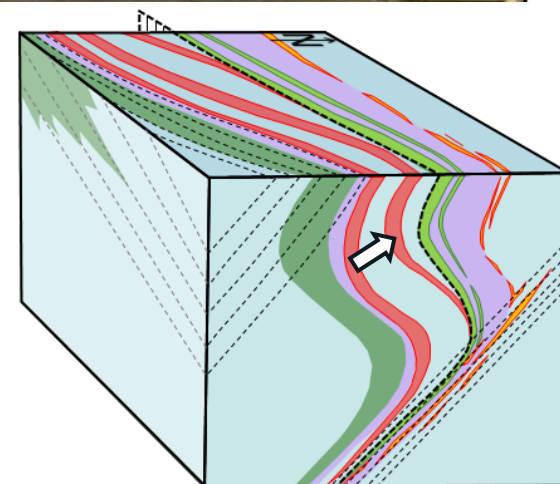
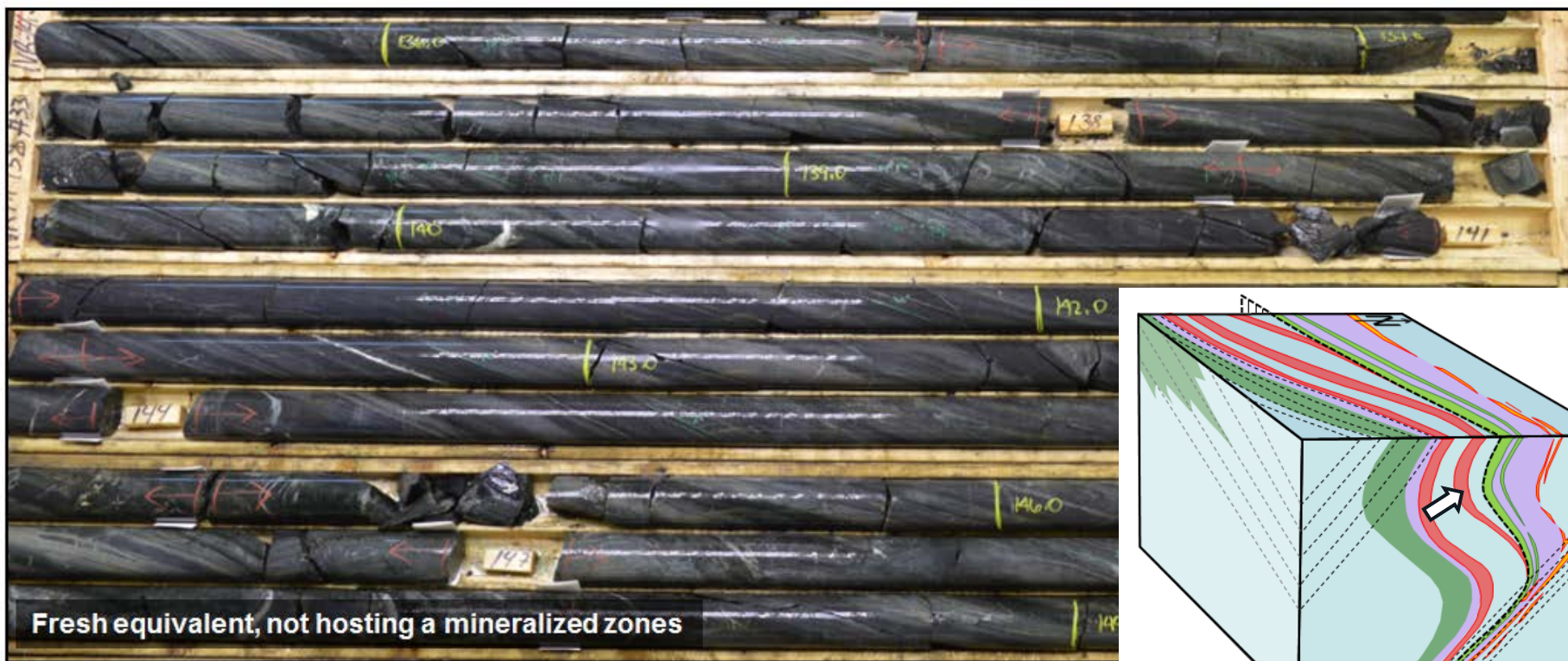


AMARUQ: ZONE WHALE TAIL

MINÉRALISATION – IMPRÉGNATIONS À QUARTZ-ARSÉNOPYRITE-PYRRHOTITE-PYRITE

Chert (S10):

- Lighter colored rock and often more regularly bedded than its graphitic equivalent (S10E) with mm-cm chert bands and local mm iron formations (mainly as orange-beige/yellowish grunerite) intercalated with lesser amount (<50%) of pelagic sediment beds, themselves variably altered in CB, SR, CL, locally AM
- Generally very hard and magnetic unit
- Aspect changes as alteration and silica flooding/quartz veining (ore related with common Aspy-Po) intensify, often with deformation intensity (more folded and chaotic)



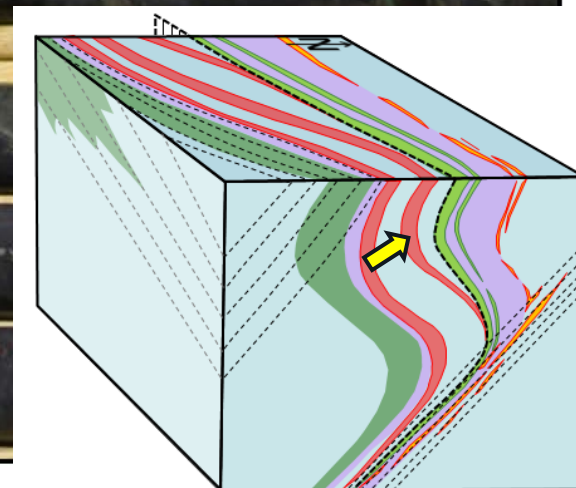
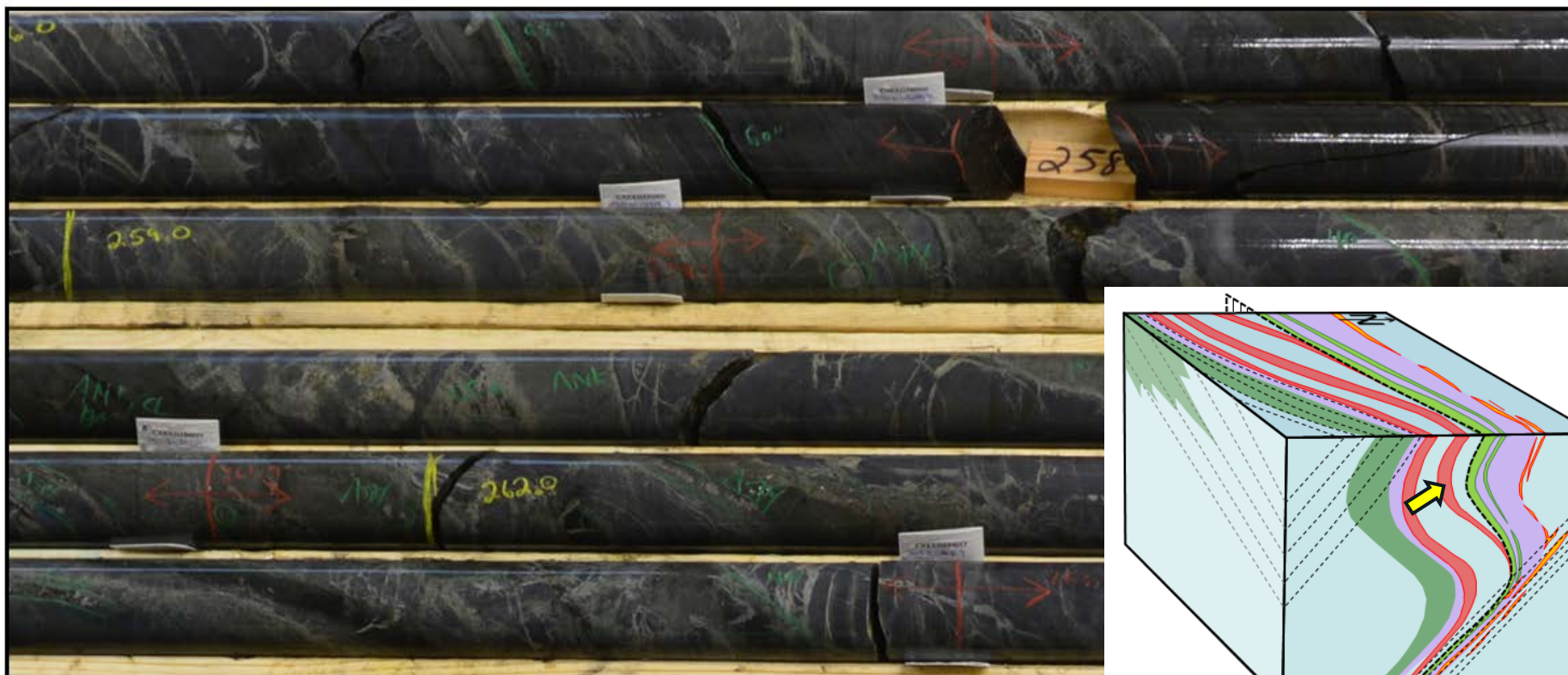


AMARUQ: ZONE WHALE TAIL

MINÉRALISATION – IMPRÉGNATIONS À QUARTZ-ARSÉNOPYRITE-PYRRHOTITE-PYRITE

Chert with moderate silica flooding (S10_mSi):

- Intermediate stage of hydrothermal circulation within chert units, may be gold bearing to a certain degree
- Increase in alteration of pelagic bands (CB, SR, CL, AM) with more chaotic and cracked aspect, often as numerous mm stringers starting at chert/pelagic bed interface and migrating in chert beds
- Lost of the parallelism between beds with quartz often bulging and becoming locally discordant, but general bedding aspect still recognizable
- Apparition of local Aspy and Po



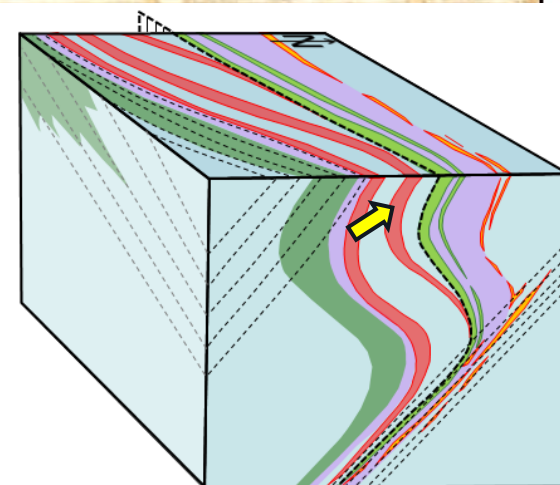
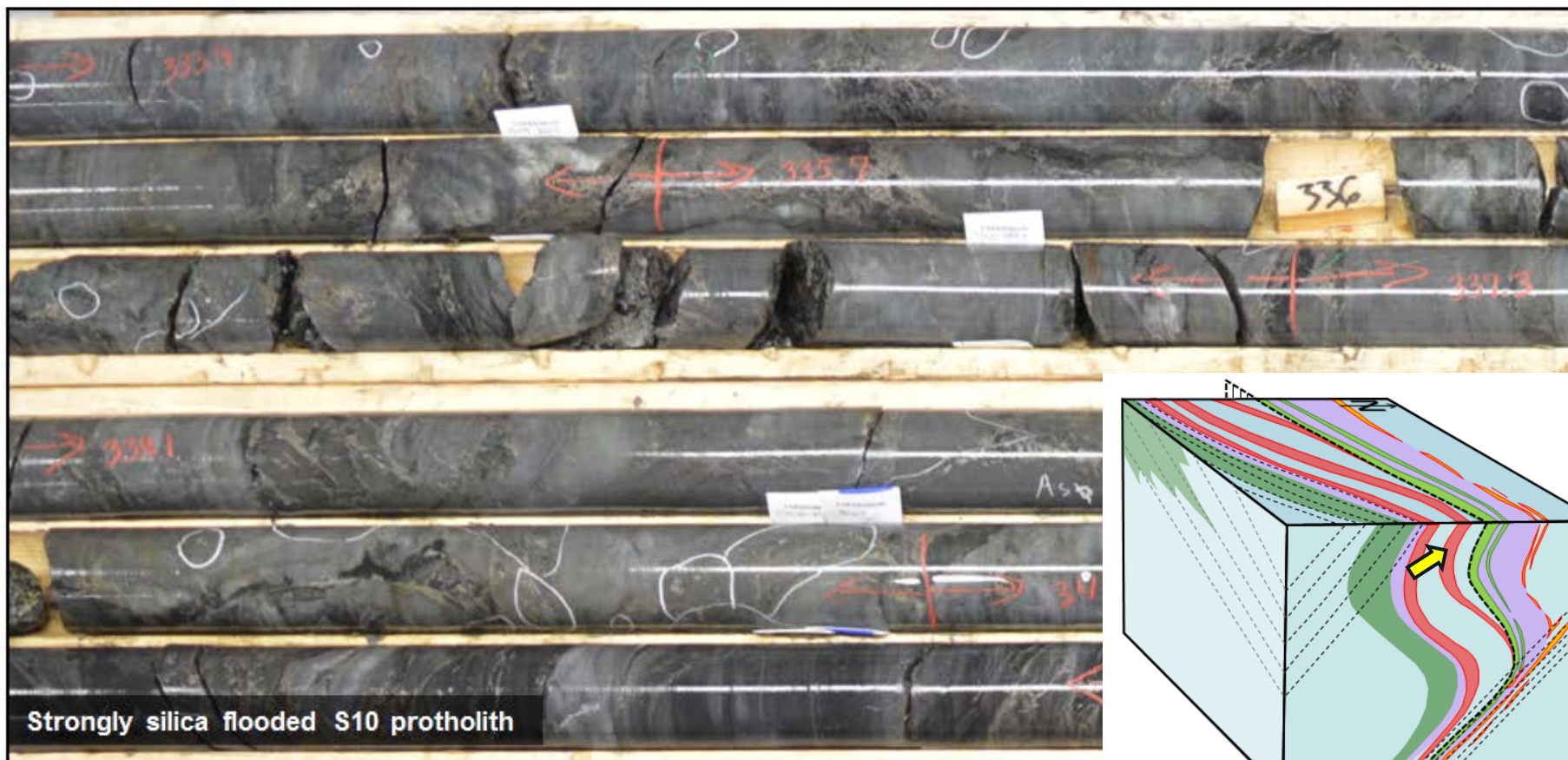


AMARUQ: ZONE WHALE TAIL

MINÉRALISATION – IMPRÉGNATIONS À QUARTZ-ARSÉNOPYRITE-PYRRHOTITE-PYRITE

Chert with strong silica flooding (S10_sSi):

- Key unit hosting significant gold zones resulting from intense hydrothermal circulation within S10 unit
- Intense diffuse quartz veining and silicification, transitional contacts with host S10, equivalent of QV units in S3, more folded and chaotic aspect, locally important loss of primary bedding (difficult to recognize S10)
- Presence of Aspy particularly characteristic, Po also frequent

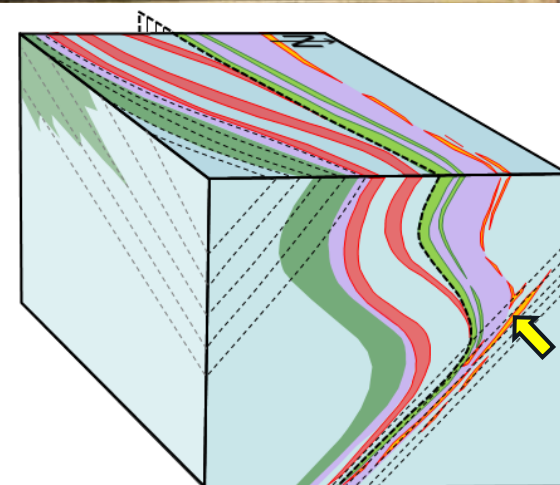
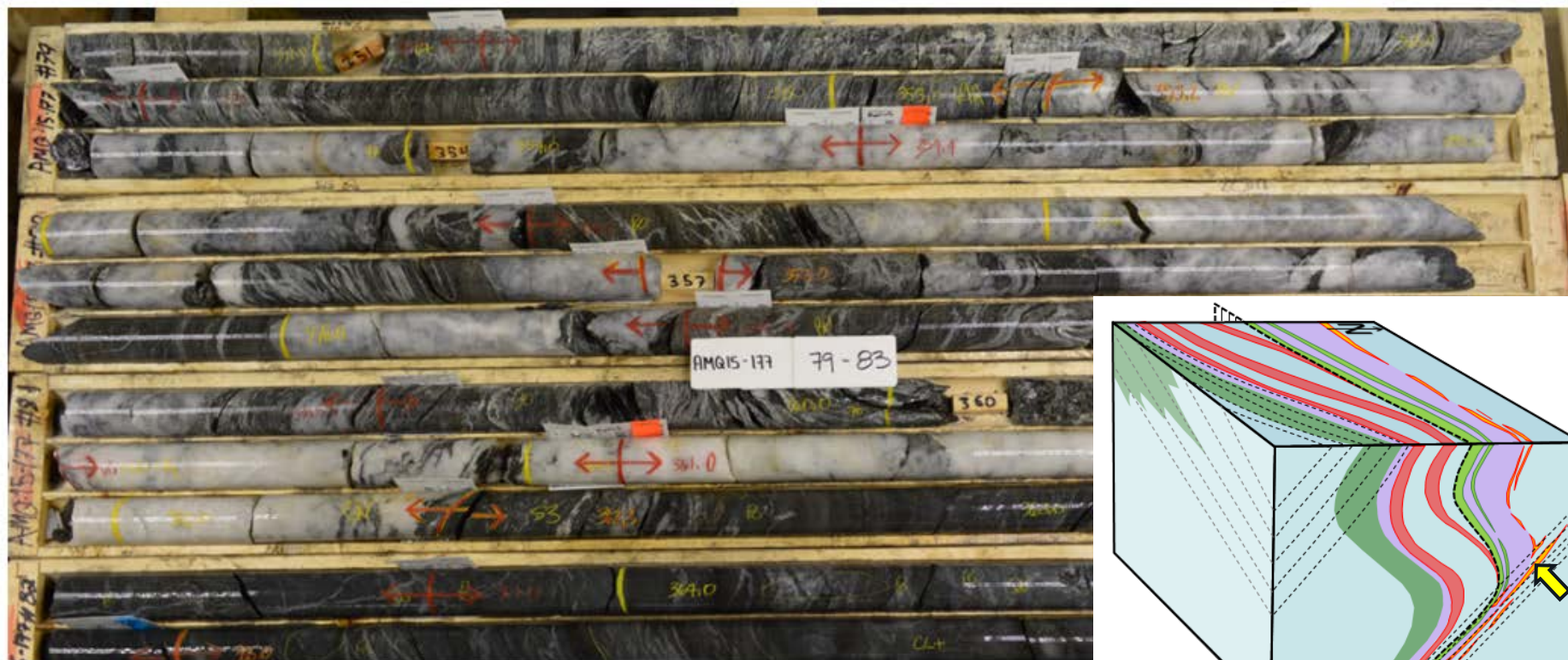


AMARUQ: ZONE WHALE TAIL

MINÉRALISATION – VEINES TARDIVES À QZ-ASPY-GN-SP-CP-OR NATIF

Quartz vein (QV), I.C zone:

- Metric to decametric white quartz veins
- Generally very little mineralization, locally base metals and traces VG
- Often developed in biotite altered and deformed V4A, near northern sediments contact, but also developed in sediments
- Gold grade not constant but sometimes very high

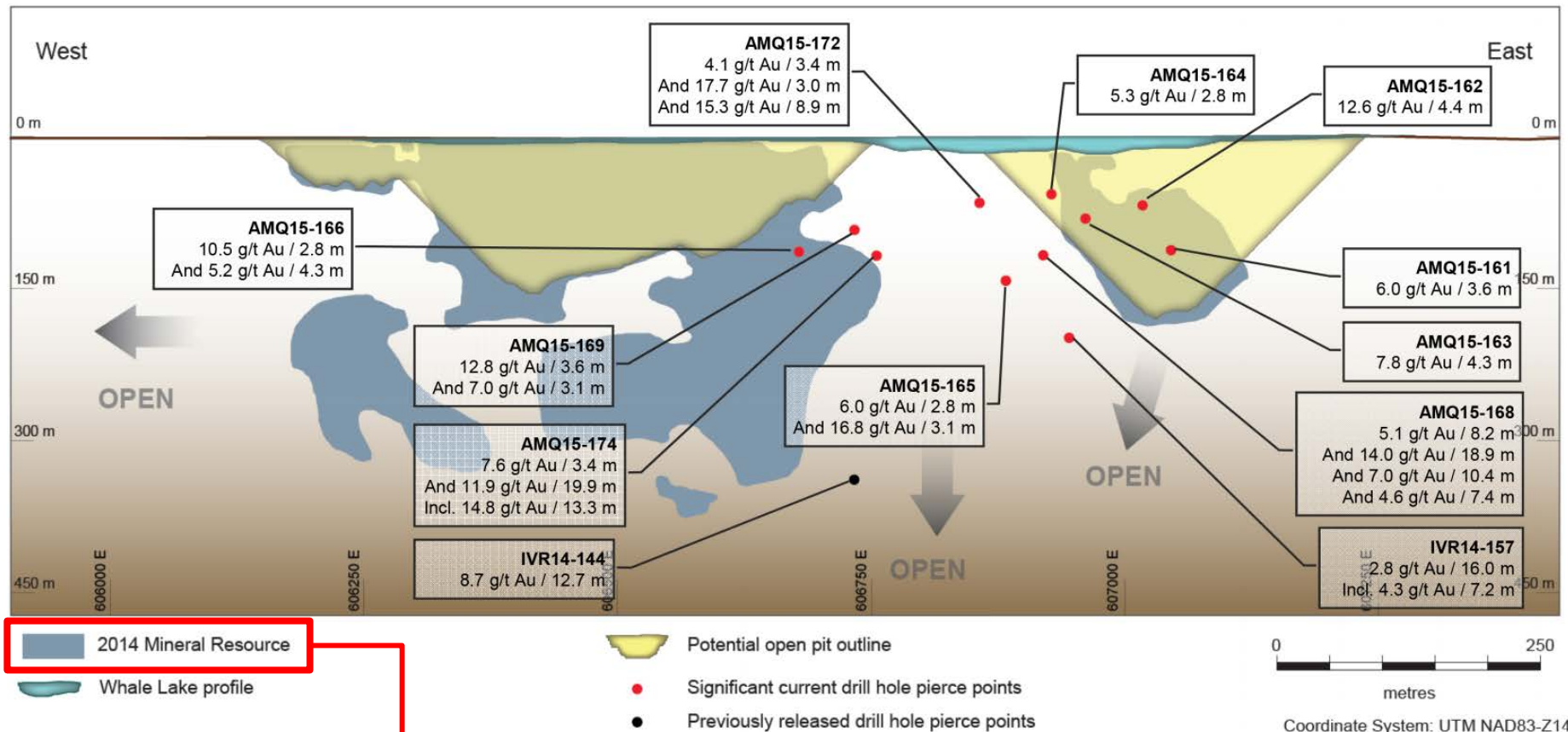




AMARUQ: ZONE WHALE TAIL

RESSOURCES 2014 ET CAMPAGNE 2015

Longitudinale composite (vue vers le Nord)

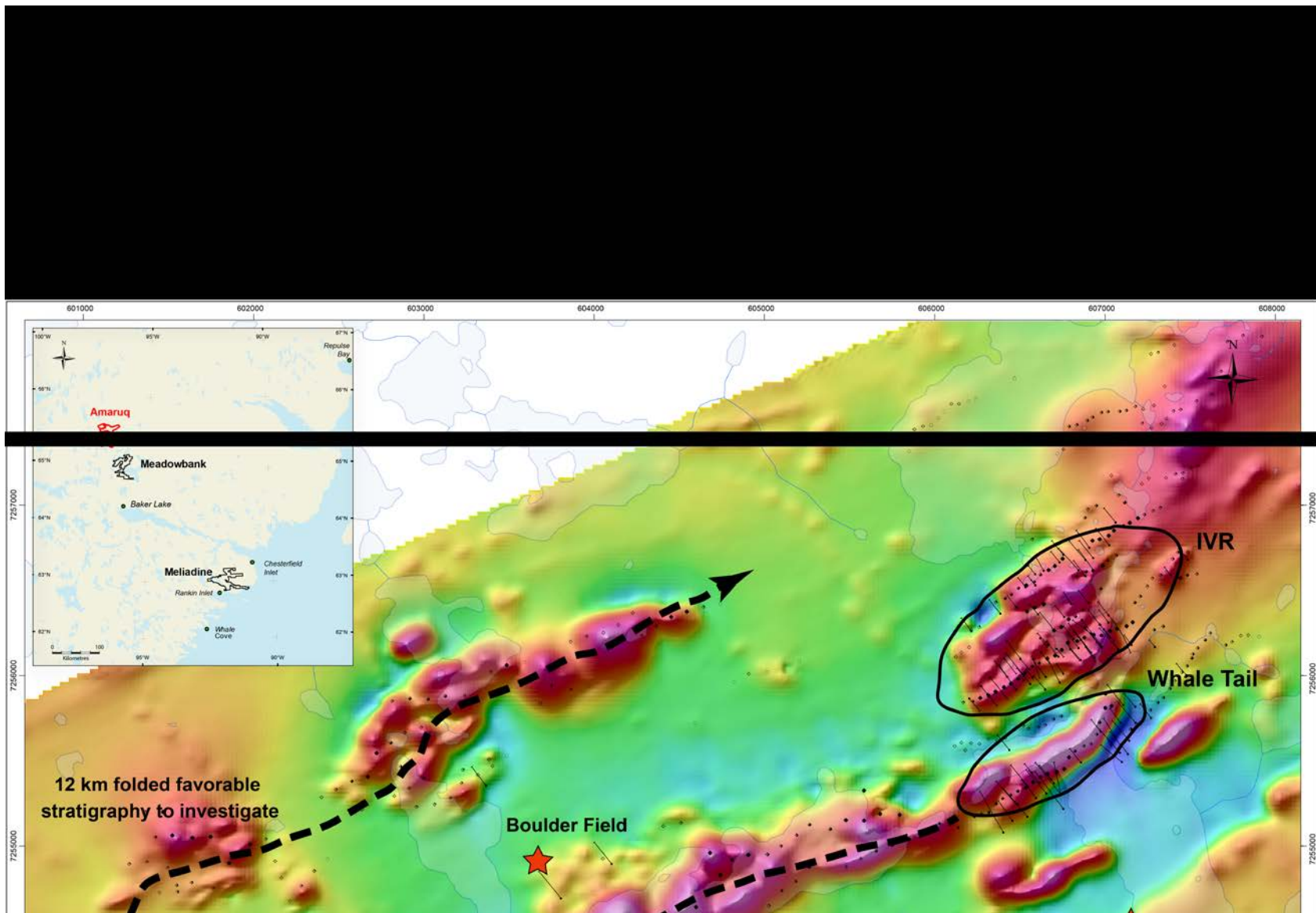


**Ressources inférées de 6.6 Mt à 7.07 g/t Au
pour 1.5 Moz (incluant 0.1 Moz à I-V-R)**



AMARUQ: EXPLORATION AILLEURS SUR LA PROPRIÉTÉ

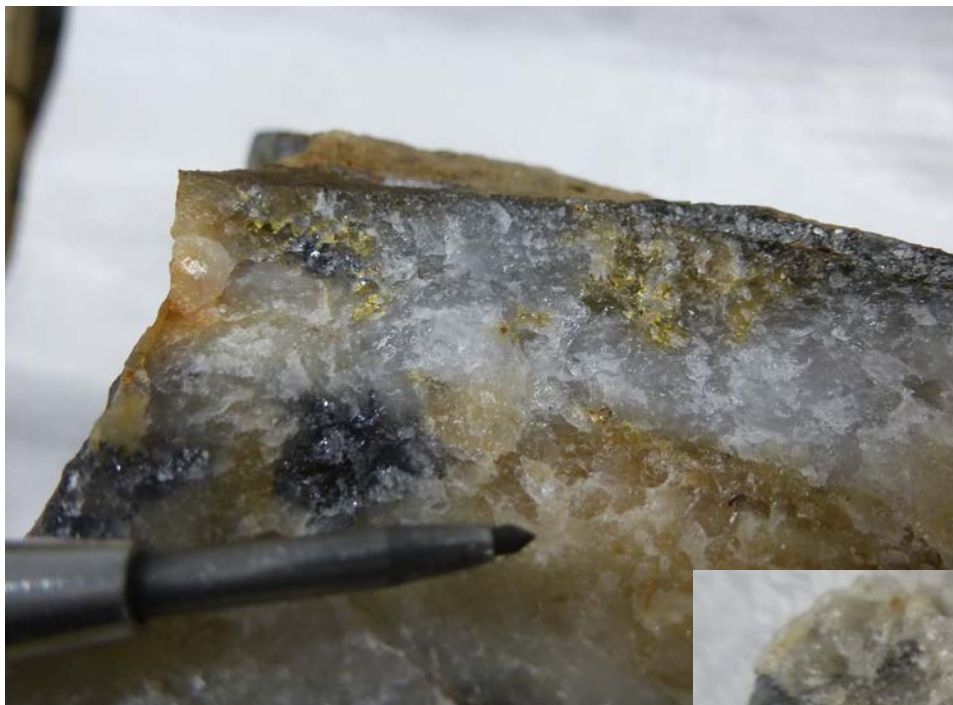
OUVERT LATÉRALEMENT, BEAUCOUP DE CIBLES





AMARUQ: EXPLORATION AILLEURS SUR LA PROPRIÉTÉ

OUVERT LATÉRALEMENT, BEAUCOUP DE CIBLES





AMARUQ

... UNE HISTOIRE À SUIVRE!

MERCI!!!

